

# MY SPACETOURER M

Configured



**TOTAL**

£ 37,485.00 OTR

Your configuration detail:

## VERSION

£ 36,940.00 OTR

MODEL SpaceTourer M	included
TRIM LEVEL Feel	included
ENGINE BlueHDi 120 S&S Manual	included

## PERSONALISATION

£ 545.00 OTR

PAINTWORK CUMULUS GREY	£ 545.00 OTR
SEAT TRIM Grey "Yumi" cloth trim	included
WHEELS 17 inch full wheel covers	included

**TOTAL**

£ 37,485.00 OTR

**TAXES**

1ST YEAR VED (VEHICLE EXCISE DUTY)

£ 540.00 OTR

**YOUR CONFIGURATION IN PHOTOS:**

\*The vehicle presented is an example only and may not match configured version. For petrol/ diesel models: The fuel consumption and CO2 emissions figures mentioned comply with the WLTP test procedure, on the basis of which newvehicles are type approved from 1 September 2018. This WLTP procedure replaces the European drive cycle (NEDC), which was the test procedure used previously. Due to more realistic test conditions, the fuel consumption and CO2 emissions measured under the WLTP are, in many cases, higher compared to those measured under the NEDC. The fuel consumption and CO2 emissions figures may vary depending on actual conditions of use and on different factors such as : specific equipment, options and class of tyres. Please contact your dealer for further information. For hybrid models: The fuel consumption, CO2 emissions and range figures mentioned comply with the WLTP test procedure, on the basis of which newvehicles are type approved from 1 September 2018. This WLTP procedure replaces the European drive cycle (NEDC), which was the test procedure used previously. Due to more realistic test conditions, the fuel consumption and CO2 emissions measured under the WLTP are, in many cases, higher compared to those measured under the NEDC. The fuel consumption, CO2 emissions and range figures may vary depending on actual conditions of use and on different factors such as : charging frequency, driving style, speed, specific equipment, options, class of tyres, outside temperature and thermal comfort on board the vehicle. Please contact your dealer for further information. For electric models: The range and electric consumption figures mentioned comply with the WLTP test procedure, on the basis of which new vehicles are type approved from 1 September 2018. They may vary depending on actual conditions of use and on different factors such as : speed, thermal comfort on board the vehicle, driving style and outside temperature. The charging time depends in particular on the power of the charger on board the vehicle, the charging cable and the type and power of the charging station used. Please contact your dealer for further information. For more information on WLTP visit: <https://www.citroen.co.uk/technology/wltp>

**Equipment included in your version:**

**COMFORT & CONVENIENCE**

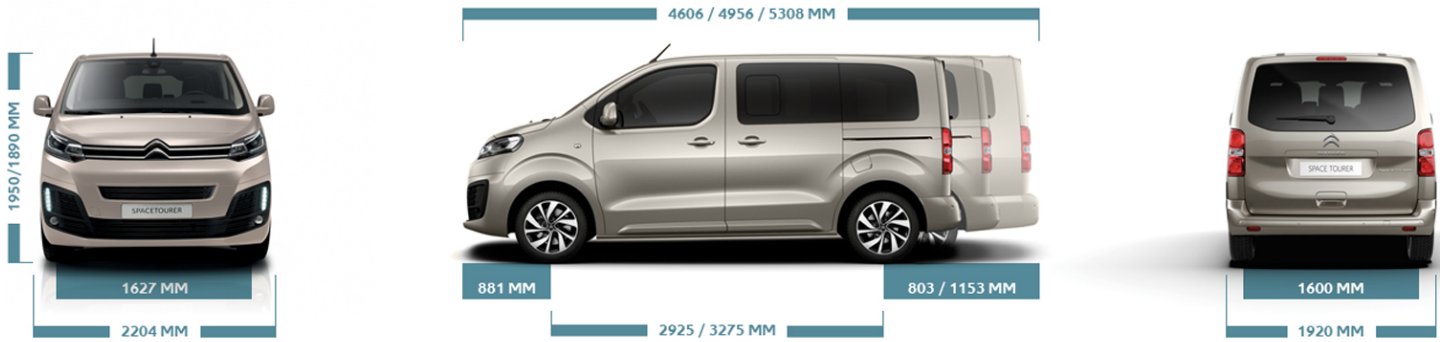
Automatic dual zone air conditioning

**WHEELS**

17 inch full wheel covers

Cruise control with speed limiter

**Dimensions**



## Engine



### BlueHDi 120 S&S 6 speed manual

CO2 EMISSIONS COMBINED  
WLTP\*

168 (g/km)

FUEL CONSUMPTION WLTP\*  
COMBINED

44.1 MPG

MAX POWER CEE

120 (88) @ 3500  
(kW/rpm)

## Technical characteristics

### ENGINE

Capacity (cc)	1499
Cylinders	4
Max power CEE (kW/rpm)	120 (88) @ 3500
Eco Label	BlueHDi

### TRANSMISSION

Transmission type	Manual
-------------------	--------

### PERFORMANCE

Max speed (mph)	99
0-62 mph (secs)	12
BHP	120

### FUEL CONSUMPTION WLTP\*

Fuel Consumption WLTP* <b>Low Speed</b> MPG	43,5
Fuel Consumption WLTP* <b>Medium Speed</b> MPG	47,1
Fuel Consumption WLTP* <b>High Speed</b> MPG	50,4
Fuel Consumption WLTP* <b>Extra High Speed</b> MPG	38,7
Fuel Consumption WLTP* <b>Combined</b> MPG	44,1
CO2 Emissions Combined WLTP* (g/km)	168

CO2 EMISSIONS (NEDC CONVERTED)

Vehicle Low (g/km)	128
Vehicle High (g/km)	130

#### WHEELS & TYRES

Wheel type	225/55 R17 XL 101W
------------	--------------------

#### WEIGHTS (KG)

Mass in service	1925
Kerb weight	1660
Max towing weight braked	1800
Gross Vehicle Weight	2695
Gross train weight	4095

#### SUSPENSION

Front	reinforced pseudo-McPherson front axle with anti-roll bar
Rear	oblique wishbone trailing arms rear axle

#### EXTERIOR DIMENSIONS (MM)

Length	4959
Width	2204
Height	1935
Wheelbase	3275
Front overhang	881
Rear overhang	803
Front track	1627
Rear track	1600

#### NUMBER OF SEATS

Number of seats	8
-----------------	---

Whilst every endeavour has been made to ensure product specifications and prices are correct at time of publication, we reserve the right to modify our vehicles' prices, specifications (including colour), equipment, accessories and characteristics or to discontinue any model, without notice, at any time. You should not rely on the accuracy or completeness of the content of these sites and Citroën UK makes no guarantees or representations regarding the use of material in this website in terms of its correctness, accuracy, reliability or otherwise. The material in this website could include technical inaccuracies, typographical errors, require updating or the addition of content and Citroën UK may make changes or improvements at any time.

[To find your configuration, please click here](#)

**LCDV code: 1CK0NNPMCKT0A0D0**

